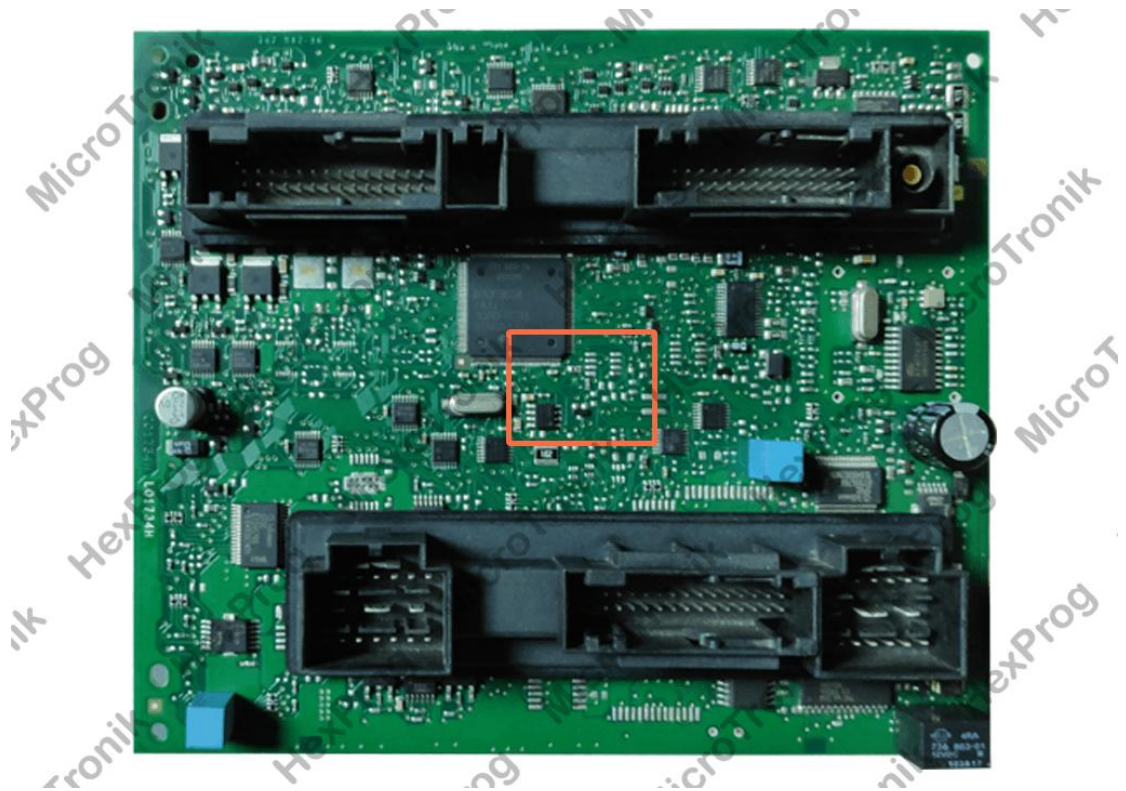
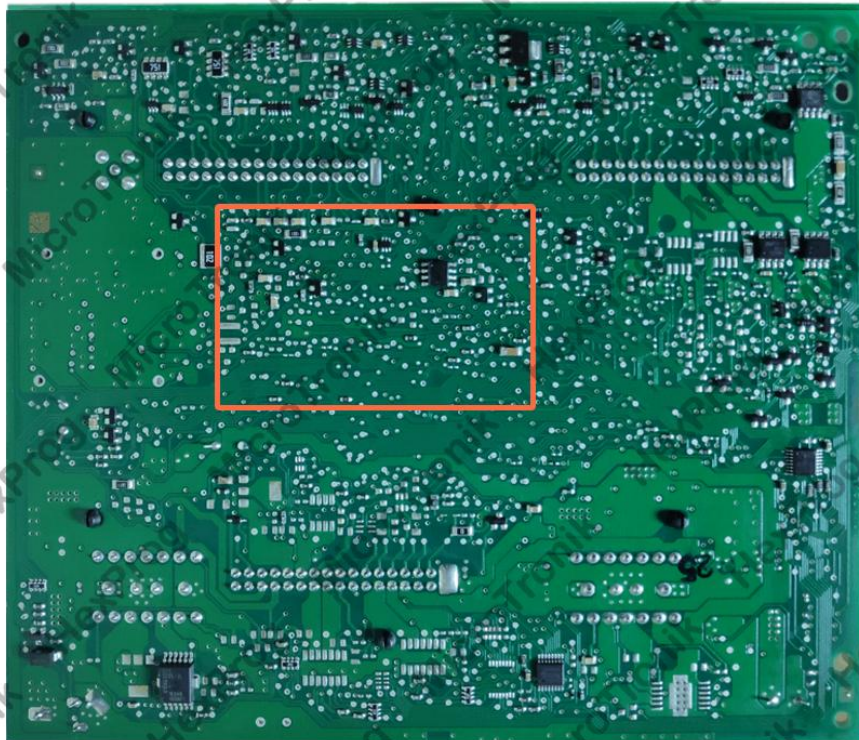


## Audi BCM2 BDM WIRING

1. Unplug BCM from the car (Located under driver side trim panel for pedal mechanism. Careless Removal of the module may cause a damage to the car or the control itself, it must be carried under user's RISK)
2. Remove BCM board from the casing

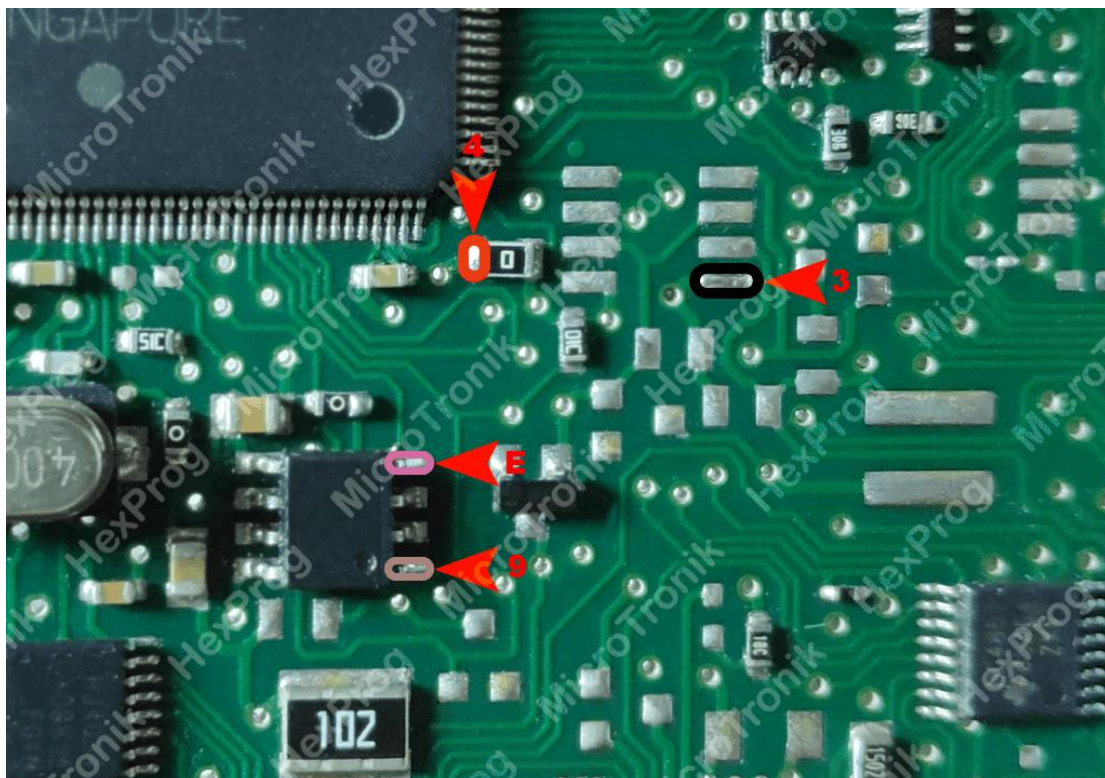


Audi BCM2 Front



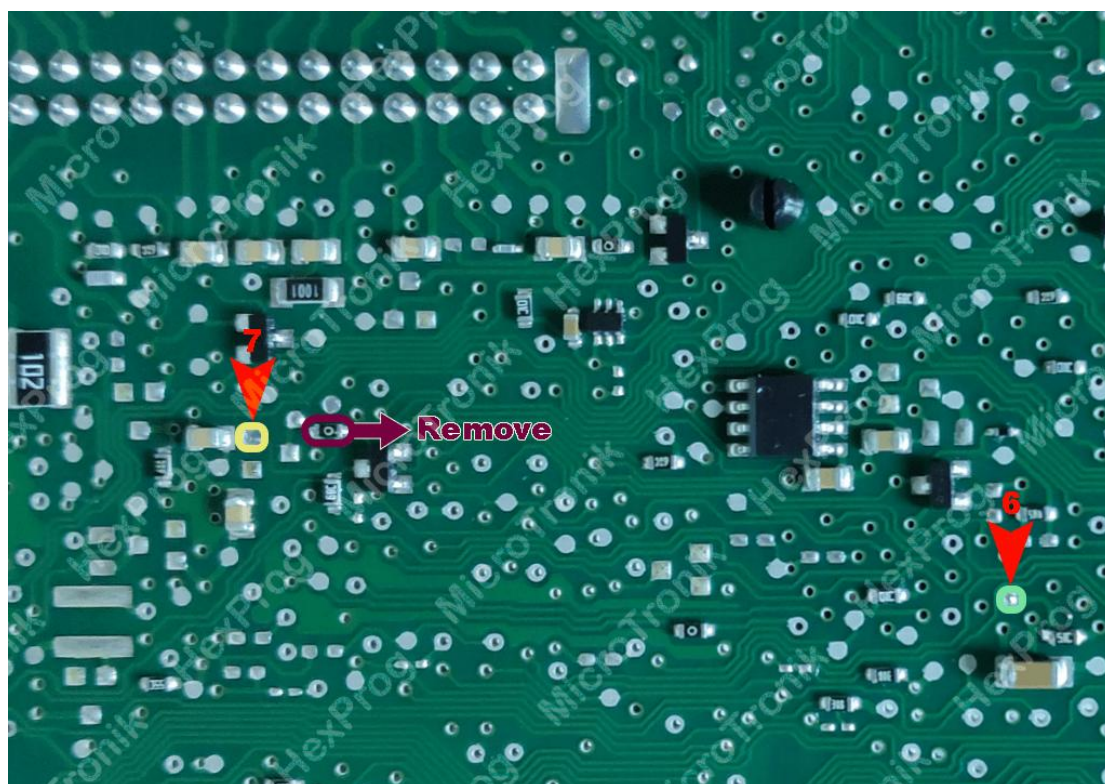
Audi BCM2 Rear

3. Solder wires to BCM based on the below connection diagram using BDM cable





## Audi BCM2 Front Wiring



## Audi BCM2 Rear Wiring

4. Select the BCM /CPU version from HexProg software
5. Do the desired function for read/write BCM in Software
6. Unsolder wires
7. Connect BCM back to car

